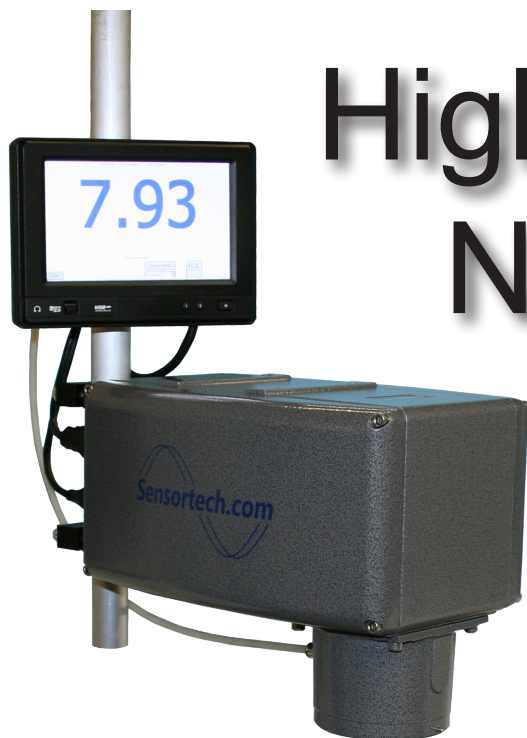


NIR 6700



High Sensitivity
NIR Moisture
Analyzer



**Mining, Minerals
&
Chemicals**

SENSORTECH'S NIR 6700

Sensortech Systems, Inc. has been the trusted name in moisture measurement and control for more than 30 years. Incorporated in 1983 Sensortech has become the global leader in applied moisture measurement technologies.



NIR 6700 PERFORMANCE

Innovative Optical Design

The NIR-6700 optical design provides a foundation of measurement stability and reliability. High precision tolerances of machined parts and alignment of optical components ensure optimal performance.

Single-Point, Dual-Purpose Detector

The long established Quadrabeam Principle combines the measurement light path and the direct (prime) light path onto a single detector eliminating variations due to aging and operating temperature more effectively than expensive matched dual detector products. The large surface area detector (10mm²) minimizes error due to product height variation.

Collimated Energy Source

Effective use of power dramatically increases optical efficiency enabling the instrument to run significantly cooler. The reduced operating temperature inherently reduces stress on electronics and power supplies, increases the life of the instrument and further reduces costs associated with added temperature conditioning.

Optimized Electronic Signal Conditioning

Oversampling, 16-bit resolution and multiple-level digital filtering minimize signal noise. Proprietary design and state of the art electronic technology further enhances instrument performance.



**BAUXITE
CLAY
COAL
COKE
ORE
SAND
SALT
SINTER**

**FERTILIZER
DETERGENT
PHOSPHATES**



The NIR-6700 Series of High Sensitivity Moisture Measurement and Control Systems is designed for the continuous monitoring of mineral & chemical applications using Near Infrared (NIR) technology.

CONTACT SENSORTECH FOR ADDITIONAL APPLICATIONS

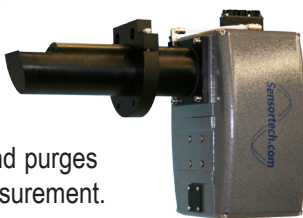
HIGH SENSITIVITY TECHNOLOGY

Mineral & Chemical Applications

All Environments & Process Locations

SNORKEL SAMPLER

Intelligent sampling method of measurement provides moisture control of inconsistent product flow. The Snorkel protrudes into the product flow, collects a sample for measurement and purges the sample for the next measurement.

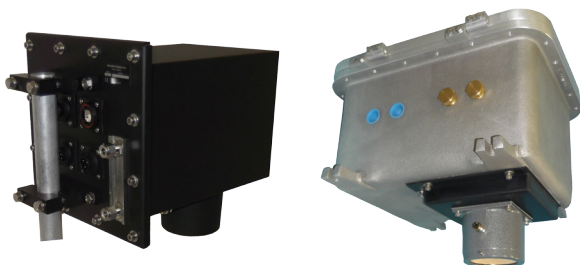


FLANGE MOUNT

Moisture measurement of closed conveyor equipment providing moisture control of a continuous flow of product. Product maintains contact with the abrasion resistant window ensuring an accurate real-time measurement.



IP67 & EXPLOSION PROOF



Sensortech specializes in Mining, Mineral and Chemical Applications operating in extreme temperatures and explosive Class I Div I environments.

Supported Communication Interfaces

Ethernet TCP/IP
RS-232/485
3 x 4-20mA
Digital Input
Digital Output



PC/Laptop



PLC/Controller

Operator Interface *
Digital Display *

DeviceNet *
Ethernet/IP *
PROFIBUS *
PROFINET *
Pyrometer *

* Sensortech offers a variety of options

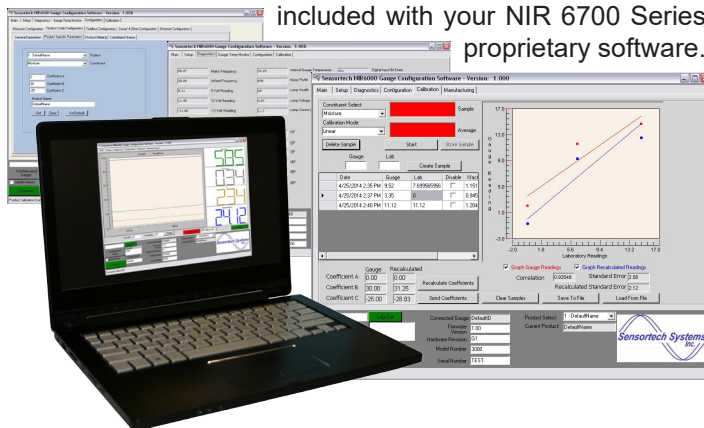
INDUSTRIAL GRADE

Materials having low optical reflectance properties require an added level of sensitivity. The NIR 6700 Series has been developed specifically for Mineral and Chemical applications with low optical reflectance properties and offer unmatched precision on materials inherently unreceptive to NIR measurements.



MANAGEMENT SOFTWARE

Measurement display, data-logging, calibration utilities and network configurations are among the many features included with your NIR 6700 Series proprietary software.



OPERATOR INTERFACE

An intelligent interactive display used to interface to your NIR 6700 Moisture Analyzer. Features a range of administrative controls, diagnostic tools and moisture management utilities that provide real-time access to your analyzer's central functions while it is in operation.



A visual indication of your processes moisture control status. Designed to be mounted in a variety of locations giving the flexibility to supervise your process where you need it most.



DIGITAL DISPLAY

On-Line Moisture Measurement and Control System

Analyzer Specifications

Number of Measured Constituents	1, 2 or 3
Moisture Range & Accuracy	0 - 95% $\pm 0.01\%$ *
* All accuracies are subject to application	
Measurement Distance	4.0 - 16 in. (100 - 400 mm)
Optical Sampling Size	1.50 in. (38 mm)
6200 Series	0.40 in. (10 mm)
Number of Stored Calibrations	50
Standard Weight	16 lbs. (7 Kg) *

* Non-Standard enclosures are subject to application.

Enclosure

Standard	Cast Aluminum
IP67	Stainless Steel
Explosion Proof	Subject to application
Dimensions	Refer to diagram on right
Power	80 / 260 VAC (50 / 60 Hz)
Option	24VDC

Temperature Control

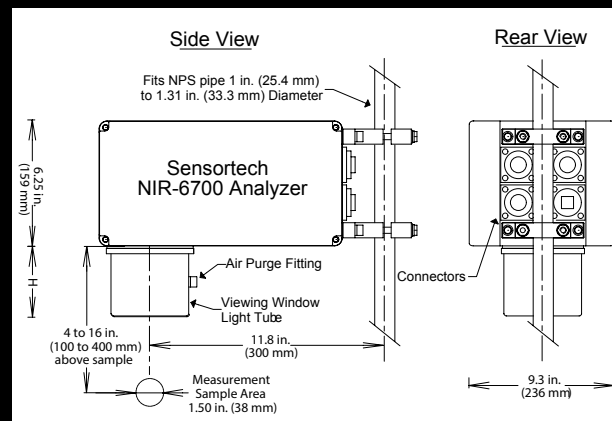
Standard Operating Temperature	32 - 120°F (0 - 50°C)
IP67	32 - 185°F (0 - 85°C)

- Several options are available spanning and exceeding the minimum and maximum stated specifications.
- Contact Sensortech for details.

Analyzer Inputs / Outputs	<ul style="list-style-type: none"> • Three self-powered isolated 4-20mA outputs • Ethernet TCP/IP, RS-232, RS-422/485 • 1 Digital Input • 1 Digital Output
---------------------------	--

Communication Interface Options	PROFIBUS, PROFINET, DeviceNet, EtherNet/IP, Modbus
---------------------------------	--

Warranty	2 year system guarantee Lamp and Motor (Lifetime)
----------	--



Standard Features Include:

- 16-bit conversion and 32-bit processing
- Wavelength selection for each application
- Advanced digital filtering for noise free signal
- Surface mount technology
- Windows operating software
- Standard ethernet output
- 3 x 4-20mA outputs
- Optical window contamination monitor
- 2 year parts & labor warranty
- Factory Calibration included with your purchase

Options:

- Digital Display (DD)
- Touch Operator Interface (OI)
- Cooling Panels (Air or Liquid Cooled)
- Calibration Reference Standards
- Product Temperature Sensor
- PROFIBUS, PROFINET, EtherNet/IP, DeviceNet, Modbus
- KEL-F, Quartz, and Sapphire Viewing Windows
- Extended Warranty

Sensortech Guarantee

All products manufactured by Sensortech Systems, Inc. are warranted against defects in material and workmanship for a period of two years from date of shipment. In the event any product manufactured by Sensortech Systems, Inc. proves to be defective during the warranty period, it will be repaired free of charge.

For Additional Details Please Visit:
www.sensortech.com

© 2017 Sensortech Systems, Inc.



SENSORTECH SYSTEMS, INC.
HEADQUARTERS

341 Bernoulli Circle
Oxnard, California 93030
United States of America

Phone: (805) 981-3735
Fax: (805) 409-4833

sales@sensortech.com
www.sensortech.com

SENSORTECH SYSTEMS
EUROPE BV

Distributiestraat 73
4283 JN GIESSEN
The Netherlands

Phone: +31(0) 183 445051
Fax: +31(0) 183 445059

info@sensortechsystems.eu
www.sensortechsystems.eu